

Tube Insertion Mechanism Upgrade

Increased insertion depth

For large-diameter products or large coils, the tube inserter can be programmed to insert a 6-inch REELEX II tube much deeper into the coil. Together with the wire deflection segments, this ensures the inside edge of the tube fully penetrates the wall of the coil, thereby insuring against tangling upon payout.

The improved tube support design also places a better distribution of pressure on the wall of the tube, allowing for more reliable insertion.

Reduced snagging

The newly-designed tube inserter utilizes collapsible fin-like segments which expand to protect the edge of the tube as it is being inserted into the coil. These segments push cable out of the way of the tube, thereby preventing any snagging or catching that might take place upon tube insertion.

Designed for green packaging

The new tube inserter is specifically designed to accommodate the new paper fiber REELEX II tube as well as traditional plastic tubes. When switching between fiber and plastic tubes, only the tube separator and support structure must be changed (parts included in kit).

The new fiber tube is made from recycled paper and is thus far more environmentally-friendly than plastic tubes, without sacrificing capability or cost-effectiveness.



INCLUDES

- New tube separator mechanism with parts allowing for easy switching between fiber or plastic tubes
- Improved tube inserter design including new wire grabber and loose cable deflection features
- Improved programming to allow deeper tube insertion into coil
- All mounting hardware
- All necessary sensors and switches

PRICE

Price: \$4,000.00 USD

Rates: Standard technician service rates apply

NOTES

Visit by REELEX personnel is highly recommended for the first kit installation.

For REELEX II tube use only.

PART NUMBERS

Left to Right Machines: LOADER-TUBE/MR1 #20066

Right to Left Machines: LOADER-TUBE/MR2 #21068

Box Folding Mechanism Upgrade

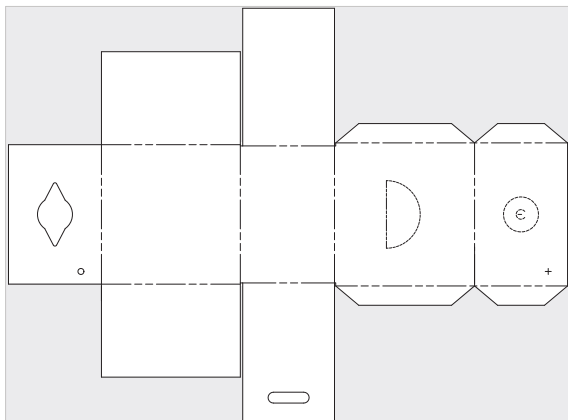
The box folding mechanism upgrade allows the "Type 2" box type to be used across a wide range of coil sizes, including coil diameters down to 13.5 inches.

Whereas previously, the "Type 1" D-2000 box would be used for coil diameters from 13.5 inches to 15.5 inches, and the "Type 2" box for large coils, the new folding mechanism upgrade allows one box type to be used for all coil diameters. Normal setup is still required when changing box sizes.

The advantage of this capability is packaging material cost and reduced waste. Because the design of the Type 2 box utilizes cardboard more efficiently, utilizing this box design on smaller coil diameters can save as much as 20% on material costs and greatly reduce the amount of cardboard necessary for production.

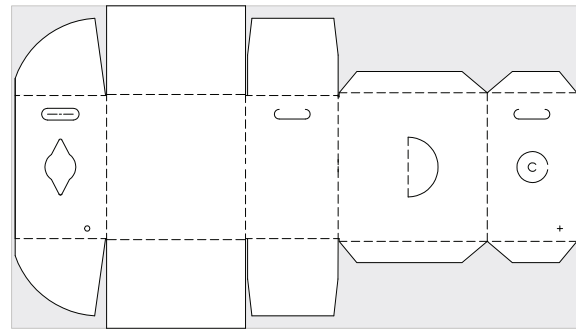
Upgrade is not compatible with D-2000s with option that pulls the inside end of the cable to the outside of glued box.

Cardboard "Blank" Comparison:



"Type 1" Box Design:

- Typically used for coils ranging from 13.5" to 15.5".
- Box folding mechanism upgrade allows one D-2000 to eliminate the box folding hardware used for the assembly of this box type.



"Type 2" Box Design:

- Typically used for coils ranging from 15.5" to 20.5".
- Utilizes the cardboard blank more efficiently.
- Less waste and up to 20% less cost than "Type 1" box.
- With upgrade, one D-2000 can use "Type 2" box design for all products regardless of coil diameter.

INCLUDES:

- Modified box folding hardware
- Changes to mounting locations and other adjustments
- All mounting hardware

PRICE

\$500.00 USD (Refundable)

NOTES

Price is refundable upon the receipt of each machines' box assembly parts. All parts can be installed without the assistance of REELEX personnel.

For more information and details, please contact Brian Moore (bmoore@reelex.com)

PART NUMBER

BOX-FLD/UPGRD #20011